

4

Saint Joseph's Primary School

CLIENT

Saint Joseph's Primary School

PROJECT NAME

Recreation Garden

LOCATION

Saint Joseph's Primary School, Malmesbury

SOLUTIONS IN PLANNING FOR

Planning Permission

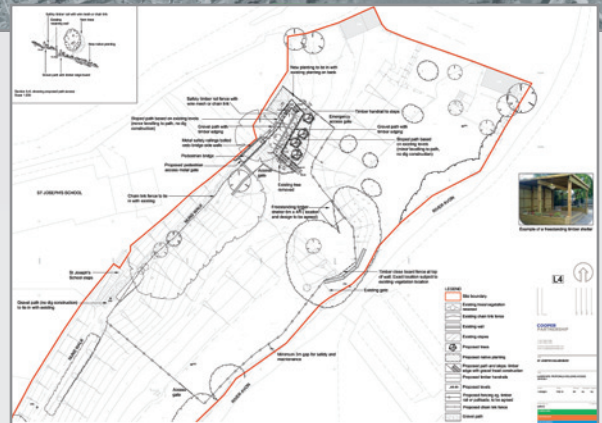
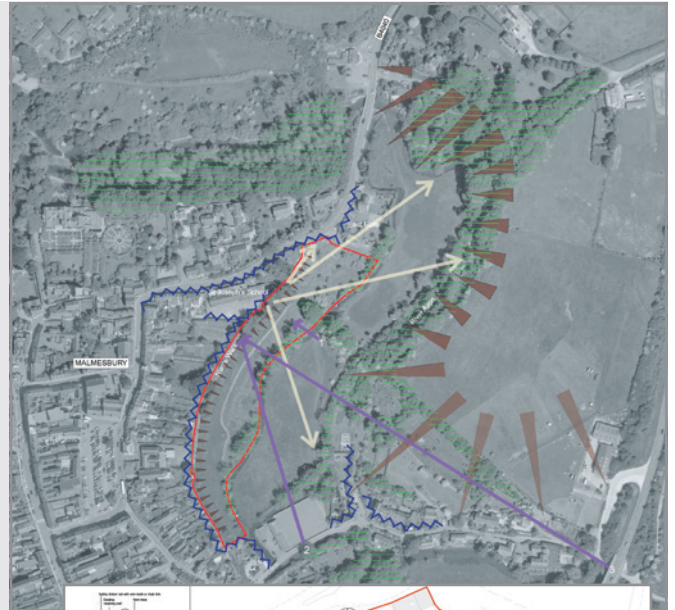
HPP were asked by St. Joseph's School to co-ordinate and negotiate a planning application for the change of use of agricultural land to form an informal recreation space to enable the expansion of the school grounds and facilities.

The main constraints of the site included its greenfield location, being situated outside the settlement boundary and lying within an identified floodplain. The presence of scheduled ancient monuments within and adjacent to the site were also a key consideration. To take account of these issues HPP advised the client that a sensitively designed, low-impact scheme, which required minimal disruption to the landscape and character of the natural environment should be prepared.

In order to achieve an appropriate scheme that would be supported by English Heritage and the District Council, the development was centred on the replacement and improvement of existing features including paths, gates and railings. No-dig methods of construction were proposed, along with a temporary structure that required no hardstanding or disruption to the ground surface. The scheme utilised the natural landforms which limited visibility of the proposals and, therefore, retained the character of the landscape.

To overcome planning policy constraints, it was important for the supporting information that accompanied the application to place emphasis on the schemes conformity to national planning policy guidance. This included, amongst other things, that the development posed no increased flood risk, was sympathetic to the heritage assets and retained the character of the landscape.

To ensure support for the scheme, particularly in light of the location of the development, HPP promoted community involvement was undertaken from the outset. Furthermore, HPP advocated that the scheme was essential in terms of expanding the school's outdoor facilities, which had solely consisted of a playground.



The scheme was approved for an informal recreation space, landscaping works, including the formation of new paths, fences, new access gates, the erection of a timber shelter and new planting.

In summary, the proposal will provide a much needed recreation garden for St. Joseph's School that has been sensitively designed and will provide pupils with a safe, attractive and green outdoor amenity space to learn and interact.